



**Catchment
Sensitive
Farming**

Working together for
a healthy environment

Natural Flood Management and Catchment Sensitive Farming (CSF)

Catchment Sensitive Farming (CSF) is led by Natural England, in partnership with Defra, the Environment Agency and the Forestry Commission.



Introduction to CSF

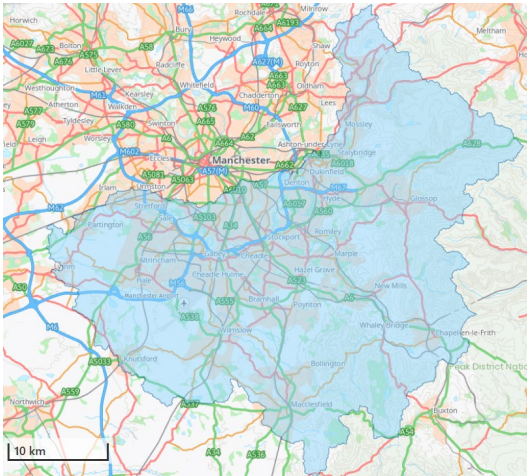


Kathryn Kelsall: Catchment Sensitive Farming Adviser - Upper Mersey

Led by Natural England in partnership with Defra, the Environment Agency and the Forestry Commission.

CSF works together with farmers and organisations in priority areas across England to improve the quality of air, water and natural flood management.

Visit [GOV.UK/CSF](https://gov.uk/csrf) to find the email address of your local team



Catchment Sensitive Farming (CSF) is led by Natural England, in partnership with Defra, the Environment Agency and the Forestry Commission.



Introduction to CSF cont.

Our advice

- We offer confidential advice so you can take positive actions
- Seek 'win-wins' for the environment and your business
- We give free, government-funded advice and training across England

How we work

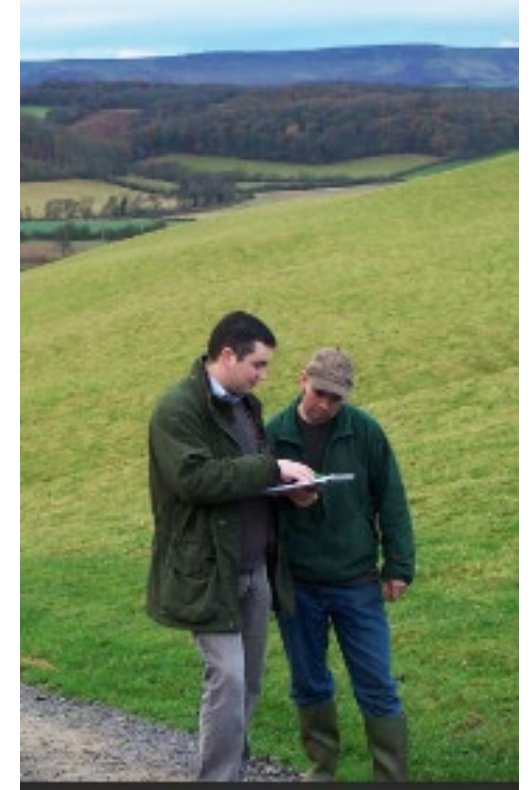
- One-to-one visits from your local CSF Adviser
- Tailored on-farm advice from specialists
- On-farm events, shows and demonstrations
- Newsletters, on-line events
- Advice on relevant grants

We can help...

- Save you money
- Future-proof your farm
- Improve your local environment
- You meet current regulations

Advice

- Soil management
- Nutrient, slurry, and manure management
- Ammonia emission reduction
- Farm infrastructure and machinery set-up
- Pesticide handling
- Water resources and natural flood management
- Local environmental priorities
- Land management
- Agricultural transition, including grants





CSF referral for specialist advice

CSFM1-M7:	A range of soil, slurry, manure and livestock feed sampling and analysis to recommend actions for healthy soils
CSF1:	Catchment Sensitive Farm Review
CSF2:	Nutrient Management Planning
CSF3:	Farm Infrastructure Audit
CSF5:	Water Flow Management
CSF8:	Improving Soil Management
CSF12:	Water-Holding Structures
CSF16:	Soil and Nutrient Management Planning
CSF17:	Farm Machinery Management
CSF18:	Managing Land Drainage to Reduce Diffuse Pollution
CSF19:	Natural Flood Management
CSF20:	Soil Health
CSF21:	Sustainable Water Usage
CSF22:	Woodland for Water and Air
CSF30:	Reducing Farm Cultivations

Catchment Sensitive Farming (CSF) is led by Natural England, in partnership with Defra, the Environment Agency and the Forestry Commission.





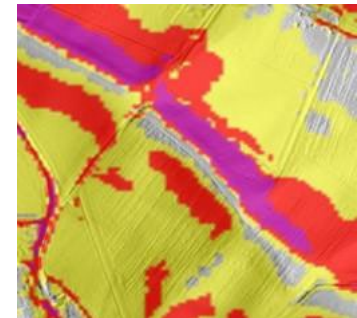
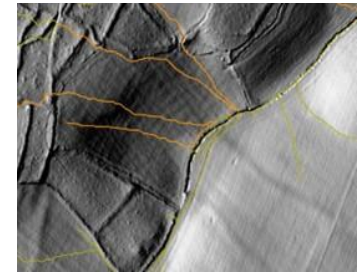
How to contact your local CSF adviser

- [Catchment Sensitive Farming: advice for farmers and land managers - GOV.UK](#)
- Catchment Sensitive Farming Advice Request Form:
 - Farm contact details
 - Tell us about your farm
 - What advice would you like from CSF?
- Send to: csf.northwest@naturalengland.org.uk
- CSF will reply based on the environmental priorities in your area and will either:
 - arrange a one to one consultation with your local CSFA
 - link to other sources of advice and information
- We focus our support on farms that can make the greatest improvement to water and air quality, and natural flood management.

ALERT

ALERT (Agricultural Land Environmental Risk and Opportunity Tool)

- **Soil Classification** is important for determining how an Overland Flow Pathway might behave.
- **Overland Flow Pathways** are a useful indicator of transport routes of water and pollutants across the landscape.
- **Slope Threshold** can determine both the power with which water can erode soils and the distance it can carry pollutants across the land.



Managing water from yards

Look for opportunities to improve management of water within the yard.

- **Clean and dirty water separation**

- ⬇ amount of rainwater from entering slurry store, ⬇ volume of slurry that needs to be stored and spread.
- Enable it to be spread when soil is in optimal condition – reduce potential for soil compaction

- **Rainwater harvesting**

- Rainwater goods: gutters, storage tanks etc.
- Can provide clean water that may be suitable to use around the farm for tasks such as yard washing.

- **Intercept and direct surface runoff away from yards**

- Helps reduce channelling of surface runoff and the risk of sediment and other pollution entering a watercourse

Managing water from yards

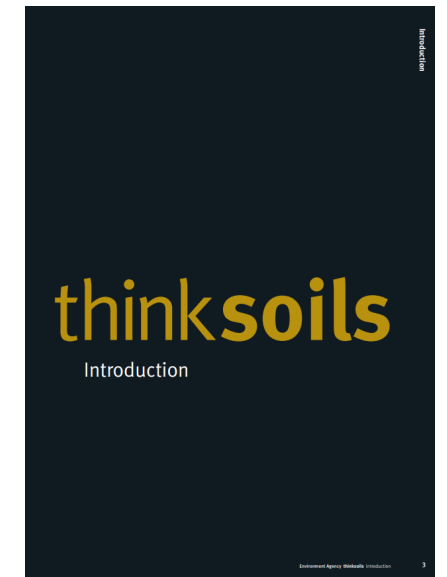
AHDB

Slurry Wizard

- By entering basic farm information such as animal numbers, yard/roof areas that capture rainfall and housing periods, the wizard calculates the volume of slurry that the farm will produce on a monthly basis
- Helps you explore the potential impact and cost from changes to infrastructure such as redirecting rainwater and roofing dirty yards.
- Provides a cost/benefit analysis for fitting rainwater goods to redirect clean water and covering dirty yards

Improving Soil Management

- Identify areas of waterlogging, yellowing of crops etc.
- Dig basic soil profile pits to assess soil structure and identify soil compaction. Also to identify signs associated with low or poor soil organic matter and low biological activity.
- Discuss measures, examples:
 - Reduce disturbance to soil
 - Winter cover crops
 - Use deep rooting plant species e.g clover
 - Avoid using heavy machinery on wet soils
 - Manage crop and livestock rotation
 - Mechanically aerate soils



CSF 5 Water Flow Management and CSF 19 Natural Flood Management

Slowing the Flow

- Identify evidence of surface runoff.
- Discuss slowing runoff:

Ponds and scrapes

Tree planting / management

Hedgerow planting / management

Leaky woody dams

Winter cover crops

Buffer strips

Swales

Arable reversion



CSF 5 Water Flow Management and CSF 19 Natural Flood Management



CSF

Grants

- **Capital Grant Scheme (CGS)**
- Currently closed
- Expect to open a new round during 2026

[Farming – Updates from Defra's Farming and Countryside Programme](#)

2025 scheme:

- 78 capital items (some items require approval from a CSF adviser)
- Funding limits
- 2025 round was closed within 5 weeks of opening

Group	Funding limit
Air quality	£25,000 maximum
Boundaries, trees and orchards	£35,000 maximum
Natural flood management	£25,000 maximum
Water quality	£25,000 maximum

- **Now is the time to get in touch!**

Catchment Sensitive Farming (CSF) is led by Natural England, in partnership with Defra, the Environment Agency and the Forestry Commission.

Grants cont.

- **Sustainable Farming Incentive (SFI)**
- New SFI launching this year with reduced number of actions

We know you need certainty to plan ahead, so we can confirm there will be two SFI application windows this year.

	Opens	Who can apply
First window	June	Those with small farms Those without existing environmental land management agreements
Second window	September	All farmers. This includes those with small farms and those without an existing ELM agreement who did not apply in the first window

[Farming – Updates from Defra's Farming and Countryside Programme](#)



CSF

Grants cont.

- **Countryside Stewardship Higher Tier (CSHT)**
- CSHT is opening through an initial controlled rollout in 2025/26. This means access to the scheme will be by invite only and gradually build up so we can ensure everyone receives the necessary support and we can make any adjustments necessary.
- **Current advice from DEFRA is to look at SFI actions before considering CSHT. CSHT is essentially for being able to enact tailored actions.**

[Farming – Updates from Defra's Farming and Countryside Programme](#)

Useful links

- CSF contacts [Catchment Sensitive Farming: advice for farmers and land managers - GOV.UK](#)
- ALERT [Tools | Farming Advice Service](#)
- Slurry Wizard [Slurry wizard | AHDB](#)
- Think soils [thinksoils | AHDB](#)
- Grant finder (CH items) [Capital grant finder - GOV.UK](#)
- Defra farming blog [Farming – Updates from Defra's Farming and Countryside Programme](#)



**Catchment
Sensitive
Farming**

Working together for
a healthy environment

**Contact your
local CSFO**

gov.uk/catchment-sensitive-farming

Catchment Sensitive Farming (CSF) is led by Natural England, in partnership with Defra, the Environment Agency and the Forestry Commission.

