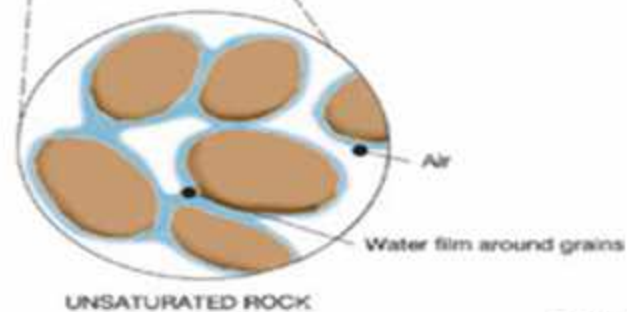
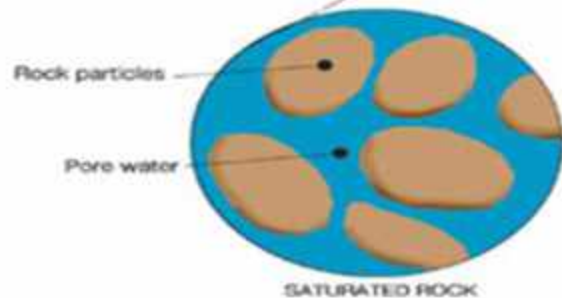
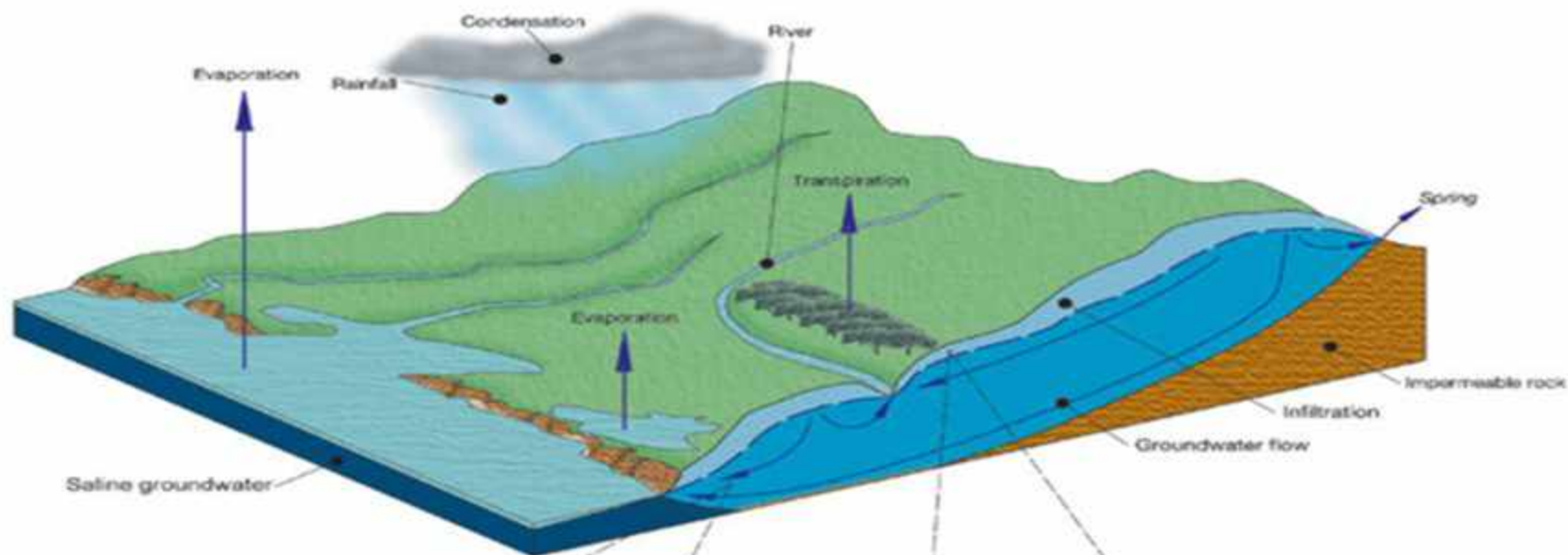


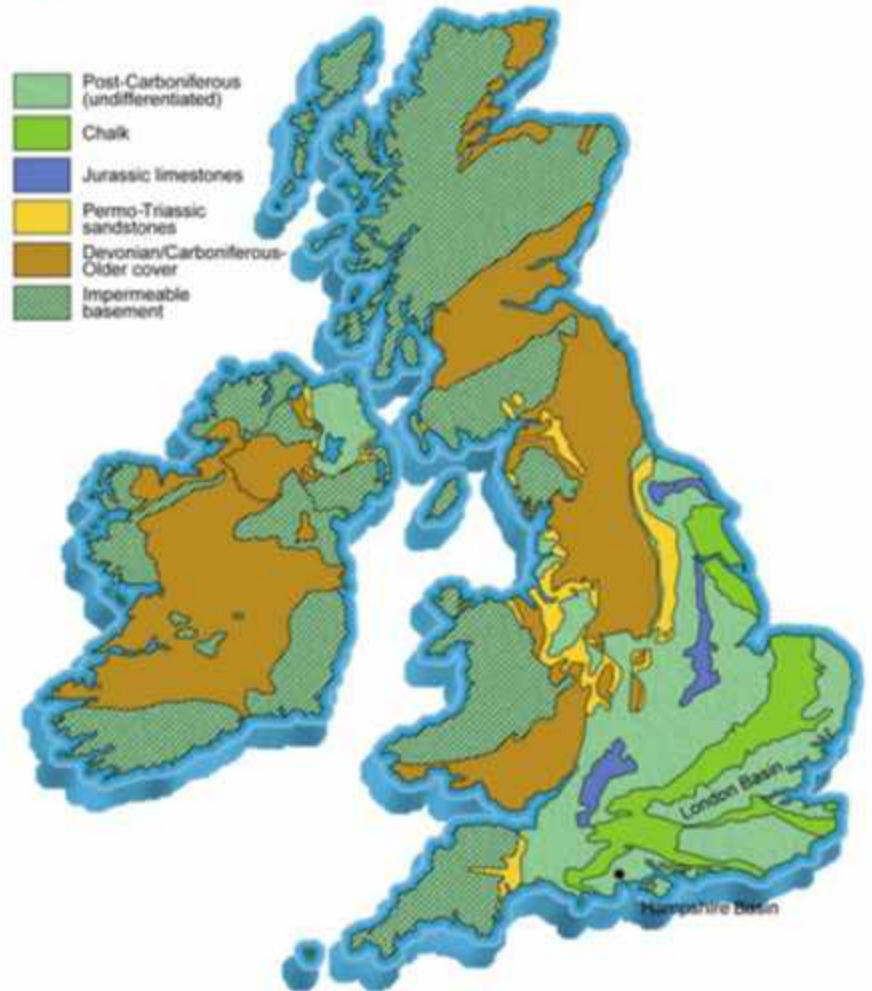
# What is Groundwater?

water held underground in soil or pores & crevices in rock



# What is an Aquifer ?

Defined as a permeable rock that stores groundwater and allows it to flow readily into a well or borehole.





# Main aquifer – Lower Mersey & North Merseyside & Rufford sandstone aquifers





# Groundwater in rocks

## Sandstone

Rapid to medium flow of water and pollutants between grains of sand and in fractures in the rock



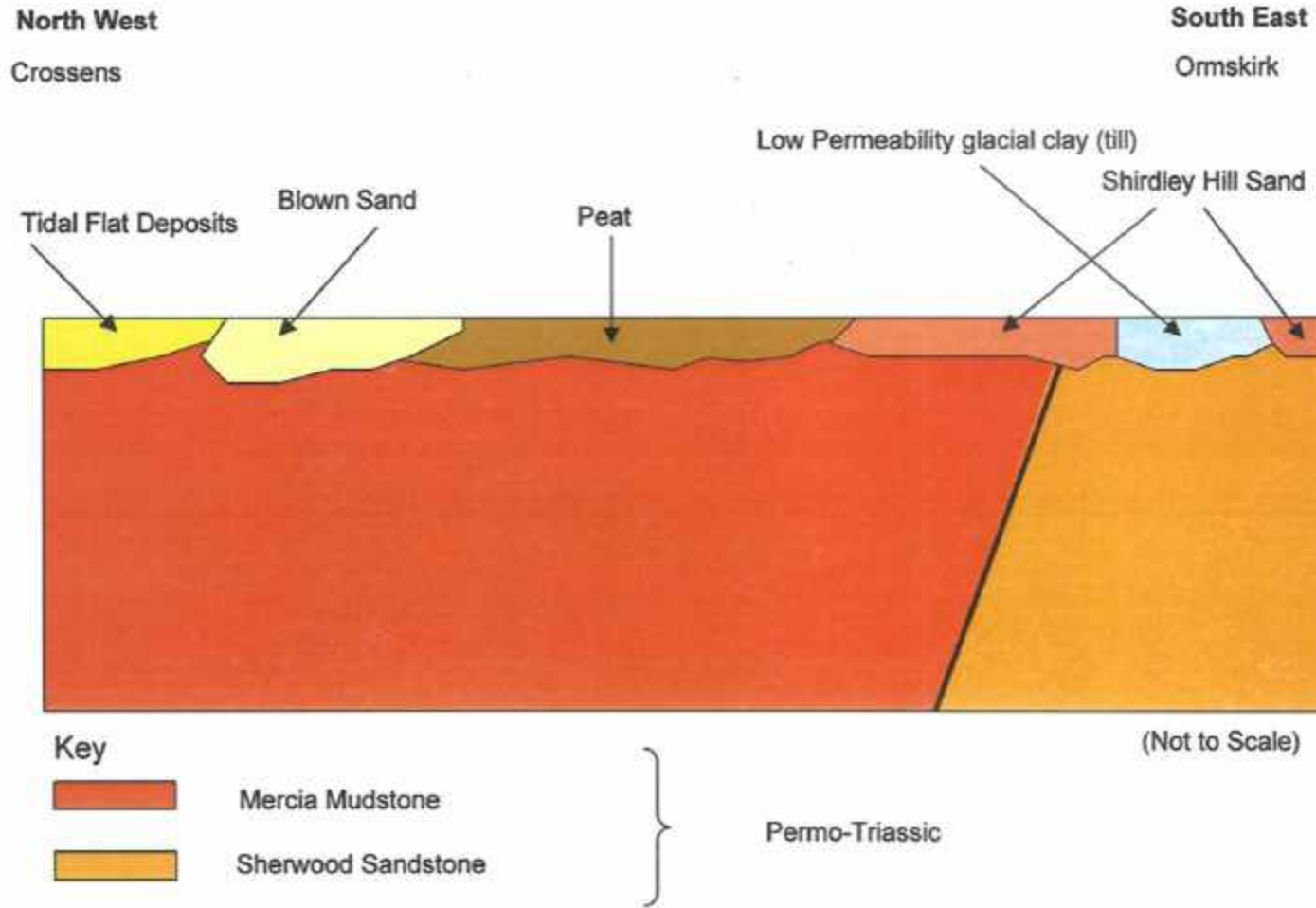


# Sandstone aquifers in Alt & Crossens

Area to west - the bedrock is mudstone, a poor aquifer



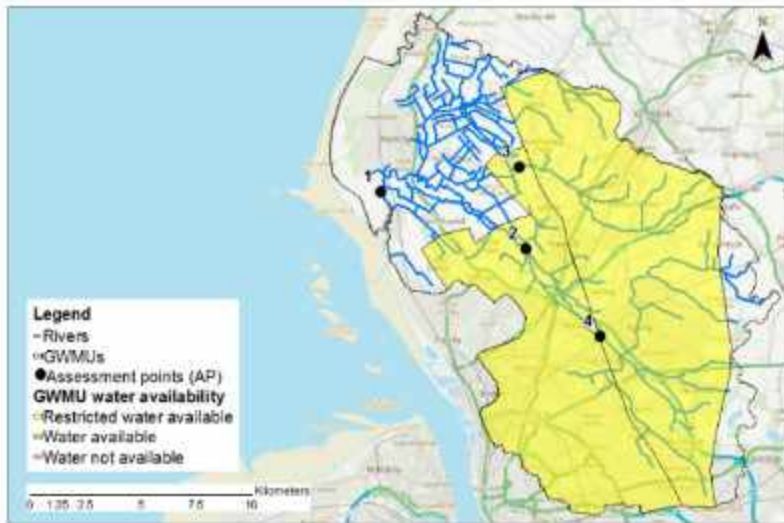
# Crossens Schematic Geological Cross Section





# Abstraction Licence Strategy - Groundwater

22% of the Crossens is underlain by principal aquifer  
69% of the Alt is underlain by principal aquifer



Alt Restricted Groundwater Available



Crossens Restricted Groundwater Available

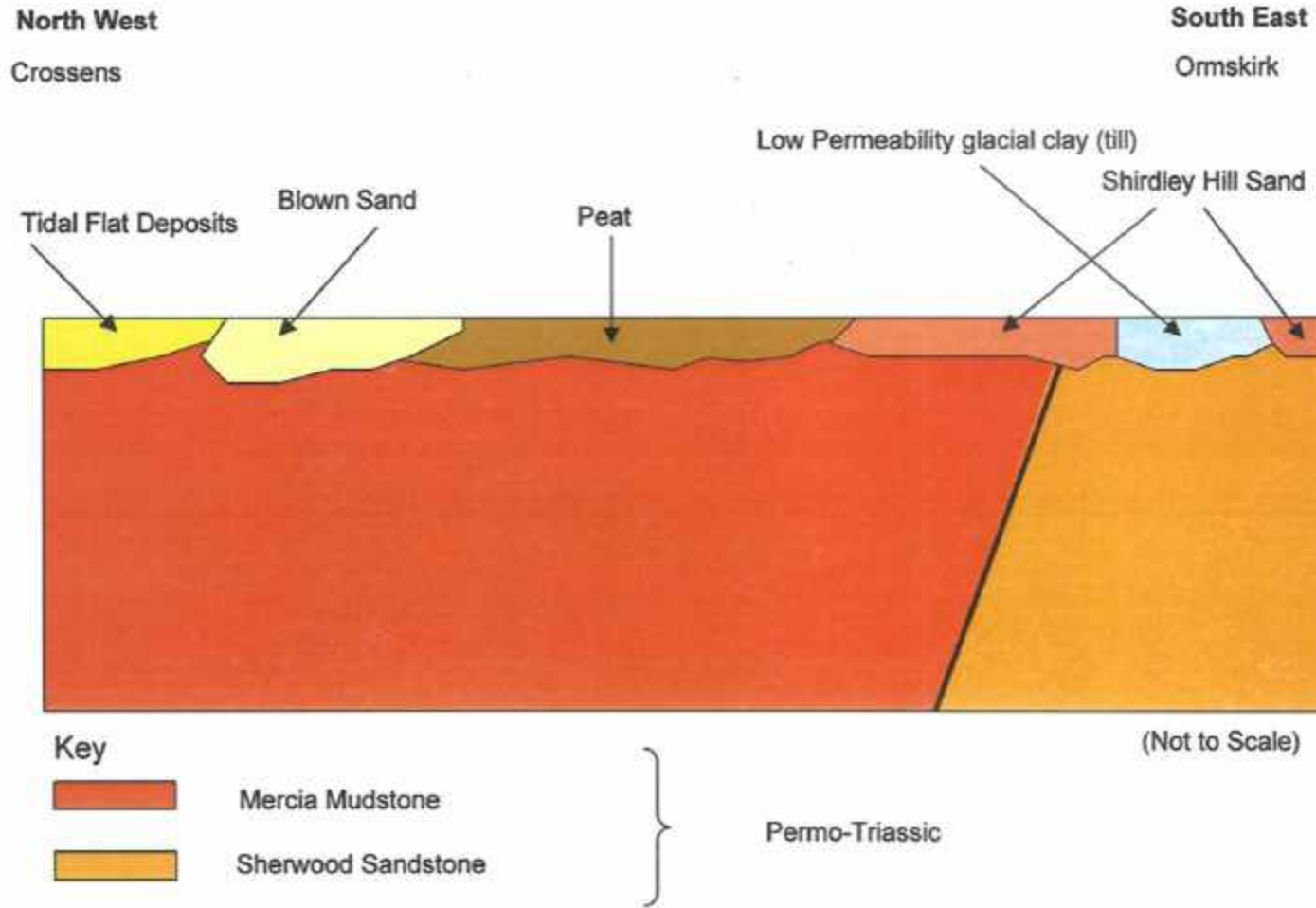




# Shallow / Superficial Geology



# Crossens Schematic Geological Cross Section





# Permeable shallow Geology

Eg sands & gravels, generally shallow  
small yields



# Agricultural Abstractions

